

Graves Into Gardens

(based on the recording by Elevation Worship | original key: B)

Words and Music by
Brandon Lake, Chris Brown,
Steven Furtick and Tiffany Hammer

♩=46 Swing-sixteenths

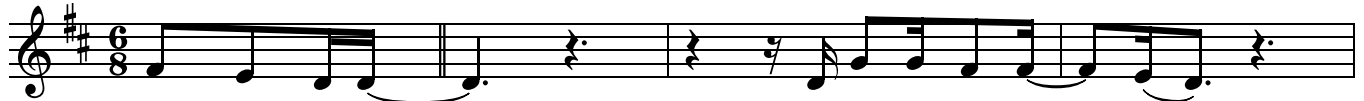
VERSE 1

G

D

G

D



1. I searched the world, ___ but it could-n't fill ___ me. _

4

Bm⁷

A⁽⁴⁾

G²



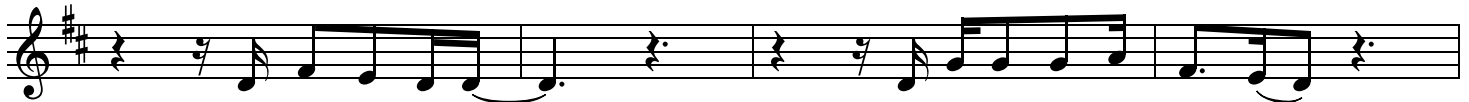
Man's emp - ty praise ___ and trea - sures that fade ___ are nev - er e - nough. _

8

D

G

D



Then You came a - long ___ and put me back to - geth - er. _

12

Bm⁷

A⁽⁴⁾

G²



And ev - 'ry de - sire ___ is now sat - is - fied ___ here in Your love. _

CHORUS

16

D

Bm⁷



Oh, there's noth - ing ___ bet - ter than You. _ There's noth - ing ___

TURNAROUND

20

G²

D



bet-ter than You. _ Lord, there's noth - ing, _ noth-ing is bet-ter than You. _

VERSE 2

24

G

D

G

D

G



2. I'm not a - fraid _ to show You my

29

D

Bm⁷

weak - ness. _ My fail - ures and flaws, _ Lord You've seen them all, _

32

A⁽⁴⁾G²

D



_ and You still _ call me friend. _ 'Cause the God _ of the moun - tain _

36

Em⁷

D

Bm⁷

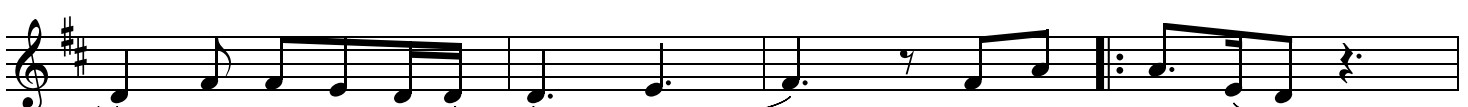
is the God of the val - ley. _ There's not a place _ Your mer - cy and grace .

§ CHORUS

40

A⁽⁴⁾G²

D



_ won't find me a - gain. _ Oh, there's noth - ing _

44

Bm⁷G²

bet-ter than You. _ There's noth - ing _ bet-ter than You. _ Lord, there's noth - ing, _

48 1, 3. D 2, 4.

noth-ing is bet-ter than You. — Oh, there's noth-ing is bet-ter than You. —

TURNAROUND

BRIDGE

52 D G D G D

(2nd x jump to Br.)

(1, 2) You turn mourn-ing to danc-
(3 - 5) You turn graves in - to gar -

57 G D G D

- ing. — You give beau-ty for ash - es. — You turn shame in - to glo -
- dens. — You turn bones in - to ar - mies. — You turn seas in - to high-

61 Bm⁷ G² 1, 2, 4. 3, 5.

D D

- ry. — You're the on - ly one who can. — — You're the
- ways. — You're the on - ly one who can. —

TAG

65 Bm⁷ G² 1. D.S. 2.

D D G D G D

on - ly one who can. — Oh, there's —